

PRODUCT MONOGRAPH  
INCLUDING PATIENT MEDICATION INFORMATION

 **FLURAZEPAM**

Flurazepam Hydrochloride  
Capsule, 15 mg and 30 mg, Oral  
USP  
Hypnotic

AA Pharma Inc.  
1165 Creditstone Road Unit #1  
Vaughan, Ontario  
L4K 4N7

Date of Initial Authorization:  
December 31, 1982  
Date of Revision:  
April 7, 2022

Submission Control Number: 250741

## RECENT MAJOR LABEL CHANGES

1 Indications, 1.1 Pediatrics	09/2021
1 Indications, 1.2 Geriatrics	09/2021
3 Serious Warnings and Precautions Box	09/2021
4 Dosage and Administration	09/2021
7 Warnings and Precautions	09/2021
7 Warnings and Precautions, 7.1.4 Geriatrics	09/2021

## TABLE OF CONTENTS

Sections or subsections that are not applicable at the time of authorization are not listed.

<b>RECENT MAJOR LABEL CHANGES</b> .....	<b>2</b>
<b>TABLE OF CONTENTS</b> .....	<b>2</b>
<b>PART I: HEALTH PROFESSIONAL INFORMATION</b> .....	<b>4</b>
<b>1 INDICATIONS</b> .....	<b>4</b>
1.1 Pediatrics.....	4
1.2 Geriatrics.....	4
<b>2 CONTRAINDICATIONS</b> .....	<b>4</b>
<b>3 SERIOUS WARNINGS AND PRECAUTIONS BOX</b> .....	<b>4</b>
<b>4 DOSAGE AND ADMINISTRATION</b> .....	<b>5</b>
4.1 Dosing Considerations .....	5
4.2 Recommended Dose and Dosage Adjustment .....	6
4.4 Administration .....	6
4.5 Missed Dose .....	6
<b>5 OVERDOSAGE</b> .....	<b>6</b>
<b>6 DOSAGE FORMS, STRENGTHS, COMPOSITION AND PACKAGING</b> .....	<b>6</b>
<b>7 WARNINGS AND PRECAUTIONS</b> .....	<b>7</b>
7.1 Special Populations.....	11
7.1.1 Pregnant Women.....	11
7.1.2 Breast-feeding.....	11
7.1.3 Pediatrics.....	11
7.1.4 Geriatrics.....	11

8	ADVERSE REACTIONS .....	12
	8.1 Adverse Reaction Overview .....	12
	8.5 Post-Market Adverse Reactions.....	12
9	DRUG INTERACTIONS.....	12
	9.1 Serious Drug Interactions .....	12
	9.2 Drug Interactions Overview .....	13
	9.3 Drug-Behavioural Interactions.....	13
	9.4 Drug-Drug Interactions .....	13
	9.5 Drug-Food Interactions.....	14
	9.6 Drug-Herb Interactions .....	14
	9.7 Drug-Laboratory Test Interactions.....	14
10	CLINICAL PHARMACOLOGY.....	14
	10.1 Mechanism of Action .....	14
	10.2 Pharmacodynamics.....	15
	10.3 Pharmacokinetics.....	15
11	STORAGE, STABILITY AND DISPOSAL .....	16
12	SPECIAL HANDLING INSTRUCTIONS.....	16
	PART II: SCIENTIFIC INFORMATION.....	17
13	PHARMACEUTICAL INFORMATION .....	17
14	CLINICAL TRIALS .....	17
15	MICROBIOLOGY.....	17
16	NON-CLINICAL TOXICOLOGY.....	17
	PATIENT MEDICATION INFORMATION .....	19

## PART I: HEALTH PROFESSIONAL INFORMATION

### 1 INDICATIONS

FLURAZEPAM (flurazepam hydrochloride) is indicated for the symptomatic relief of transient and short-term insomnia characterized by difficulty in falling asleep, frequent nocturnal awakenings and/or early morning awakening.

The use of hypnotics should be restricted for insomnia where disturbed sleep results in impaired daytime functioning.

#### 1.1 Pediatrics

Pediatrics (<15 years of age): Based on the data submitted and reviewed by Health Canada, the safety and efficacy of FLURAZEPAM in pediatric patients has not been established; therefore, Health Canada has not authorized an indication for pediatric use. (see [7.1.3 Pediatrics](#))

#### 1.2 Geriatrics

Geriatrics: Evidence from clinical studies and experience suggests that use in the geriatric population is associated with differences in safety or effectiveness.

Long-term use of FLURAZEPAM should be avoided in elderly patients. Enhanced monitoring is recommended (see [Falls and Fractures](#); [4.1 Dosing Considerations](#)).

### 2 CONTRAINDICATIONS

FLURAZEPAM is contraindicated in patients:

- with known hypersensitivity to benzodiazepines, or any ingredient in the formulation, including any non-medicinal ingredient or component of the container. For a complete listing, see [6 DOSAGE FORMS, STRENGTHS, COMPOSITION AND PACKAGING](#).
- with severe impairment of respiratory function, e.g., significant sleep apnea syndrome.
- who have myasthenia gravis
- with severe hepatic insufficiency.

### 3 SERIOUS WARNINGS AND PRECAUTIONS BOX

#### Serious Warnings and Precautions

##### Addiction, Abuse and Misuse

The use of benzodiazepines, including FLURAZEPAM, can lead to abuse, misuse, addiction, physical dependence and withdrawal reactions. Abuse and misuse can result in overdose or death, especially when benzodiazepines are combined with other medicines, such as opioids, alcohol or illicit drugs.

- Assess each patient's risk prior to prescribing FLURAZEPAM
- Monitor all patients regularly for the development of these behaviours or conditions.
- FLURAZEPAM should be stored securely to avoid theft or misuse.

## Withdrawal

Benzodiazepines, like FLURAZEPAM, can produce severe or life-threatening withdrawal symptoms.

- Avoid abrupt discontinuation or rapid dose reduction of FLURAZEPAM.
- Terminate treatment with FLURAZEPAM by gradually tapering the dosage schedule under close monitoring.

(see [Dependence/Tolerance](#))

## Risks from Concomitant use with Opioids

Concomitant use of FLURAZEPAM and opioids may result in profound sedation, respiratory depression, coma and death (see [Concomitant use with opioids](#)).

- Reserve concomitant prescribing of these drugs for use in patients for whom alternative treatment options are not possible.
- Limit dosages and durations to the minimum required.
- Follow patients for signs and symptoms of respiratory depression and sedation.

## 4 DOSAGE AND ADMINISTRATION

### 4.1 Dosing Considerations

- Sleep disturbance may be the presenting manifestation of a physical and/or psychiatric disorder. Consequently, a decision to initiate symptomatic treatment of insomnia should only be made after the patient has been carefully evaluated.
- The use of hypnotics should be restricted for insomnia where disturbed sleep results in impaired daytime functioning.
- Treatment with FLURAZEPAM should usually not exceed 7-10 consecutive days. Use for more than 2-3 consecutive weeks requires complete re-evaluation of the patient. Prescriptions for FLURAZEPAM should be written for short-term use (7-10 days) and it should not be prescribed in quantities exceeding a one-month supply.
- FLURAZEPAM should always be prescribed at the lowest effective dose for the shortest duration possible.

### Discontinuation

- FLURAZEPAM can produce withdrawal signs and symptoms or rebound phenomena following abrupt discontinuation or rapid dose reduction (see [Withdrawal](#); [Dependence/Tolerance](#)). Abrupt discontinuation should be avoided and treatment - even if only of short duration - should be terminated by gradually tapering the dosage schedule under close monitoring.
- Tapering should be tailored to the specific patient. Special attention should be given to patients with a history of seizure.
- If a patient experiences withdrawal signs and symptoms, consider postponing the taper or raising the benzodiazepine to the previous dosage prior to proceeding with a gradual taper

### Geriatric patients

- Geriatric patients in particular may be more sensitive to benzodiazepines (see [Falls and Fractures](#)).
- Long-term use of FLURAZEPAM should be avoided in elderly patients. Enhanced monitoring is

recommended.

## 4.2 Recommended Dose and Dosage Adjustment

### Recommended Dose

**Adults:** The usual adult dosage is 30 mg before retiring. In some patients, 15 mg may suffice.

**Elderly and/or Debilitated Patients:** It is recommended that therapy be initiated with 15 mg until individual responses are determined.

**Pediatrics:** Health Canada has not authorized an indication for pediatric use. (see [7.1.3 Pediatrics](#))

### Dosage Adjustment

Dosage should be individualized for maximal beneficial effects.

## 4.4 Administration

The product should be taken orally just before going to bed. The patient should be checked regularly at the start of the treatment in order to decrease if necessary, the dose or frequency of administration to prevent overdose due to accumulation.

## 4.5 Missed Dose

If the patient misses a dose, inform the patient to skip the missed dose and take the next dose at the regular dosing schedule.

## 5 OVERDOSAGE

Manifestations of FLURAZEPAM overdose include somnolence, confusion and coma. Respiration, pulse and blood pressure should be monitored as in all cases of drug overdose. General supportive measures should be employed. Intravenous fluids should be administered and an adequate airway maintained. Hypotension and CNS depression may be combated by judicious use of appropriate therapeutic agents. The value of dialysis has not been determined. If excitation occurs in patients following FLURAZEPAM overdose, barbiturates should not be used.

As with the management of intentional overdose with any drug, it should be borne in mind that multiple agents may have been ingested. The benzodiazepine antagonist, flumazenil, is a specific antidote in known or suspected benzodiazepine overdose.

For management of a suspected drug overdose, contact your regional poison control centre.

## 6 DOSAGE FORMS, STRENGTHS, COMPOSITION AND PACKAGING

Table 1 – Dosage Forms, Strengths, Composition and Packaging

Route of Administration	Dosage Form / Strength/Composition	Non-medicinal Ingredients
oral	capsule 15 mg, 30 mg	Capsule content: lactose monohydrate, cornstarch, stearic acid and talc.

		<p>Capsule shell: gelatin, titanium dioxide, FD&amp;C yellow #6, D&amp;C yellow #10, FD&amp;C red #40 and talc. The 30 mg capsule shell also contains FD&amp;C blue #1</p> <p>The edible ink for the 15 mg capsule contains the non-medicinal ingredients shellac, propylene glycol, strong ammonia solution, potassium hydroxide and black iron oxide.</p> <p>The edible ink for the 30 mg capsule contains the non-medicinal ingredients shellac, black iron oxide, propylene glycol, FD&amp;C blue #2 aluminum lake, FD&amp;C red #40 aluminum lake, FD&amp;C blue #1 aluminum lake and D&amp;C yellow #10 aluminum lake.</p>
--	--	--

**FLURAZEPAM 15 mg:** Each ivory opaque body, orange opaque cap, hard gelatin capsule, imprinted '15' with fine off-white powder fill, contains 15 mg flurazepam hydrochloride. Available in bottles of 100 and 1000.

**FLURAZEPAM 30 mg:** Each Swedish ivory opaque body, swedish orange opaque cap, hard gelatin capsule, imprinted '30' with fine off-white powder fill, contains 30 mg flurazepam hydrochloride. Available in bottles of 100 and 1000.

## 7 WARNINGS AND PRECAUTIONS

Please see [3 SERIOUS WARNINGS AND PRECAUTIONS BOX](#).

### General

FLURAZEPAM should be used with caution in patients who in the past manifested paradoxical reactions to alcohol and/or sedative medications. (see [9.3 Drug-Behavioural Interactions](#))

The failure of insomnia to remit after 7-10 days of treatment may indicate the presence of a primary psychiatric and/or medical illness or the presence of sleep-state misperception.

Worsening of insomnia or the emergence of new abnormalities of thinking or behaviour may be the consequence of an unrecognized psychiatric or physical disorder. These have also been reported to occur in association with the use of drugs that act at the benzodiazepine receptors.

**Concomitant use with opioids:** Concomitant use of benzodiazepines, including FLURAZEPAM, and opioids may result in profound sedation, respiratory depression, coma, and death. Because of these risks, reserve concomitant prescribing of these drugs for use in patients for whom alternative treatment options are not possible (see [Risks from Concomitant use with Opioids](#); [9.1 Serious Drug Interactions](#)).

Observational studies have demonstrated that concomitant use of opioid analgesics and benzodiazepines increases the risk of drug-related mortality compared to use of opioid analgesics

alone. Because of similar pharmacological properties, it is reasonable to expect similar risk with the concomitant use of other CNS depressant drugs with benzodiazepines.

If a decision is made to prescribe FLURAZEPAM concomitantly with opioids, prescribe the lowest effective dosages and minimum durations of concomitant use. In patients already receiving an opioid analgesic, prescribe a lower initial dose of FLURAZEPAM than indicated, and titrate based on clinical response. If an opioid analgesic is initiated in a patient already taking FLURAZEPAM, prescribe a lower initial dose of the opioid analgesic and titrate based on clinical response. Follow patients closely for signs and symptoms of respiratory depression and sedation (see [5 OVERDOSAGE](#)).

Advise both patients and caregivers about the risks of respiratory depression and sedation when FLURAZEPAM is used with opioids.

Advise patients not to drive or operate heavy machinery until the effects of concomitant use of the opioid have been determined.

### **Dependence/Tolerance**

Use of benzodiazepines, such as FLURAZEPAM, can lead to abuse, misuse, addiction, physical dependence (including tolerance) and withdrawal reactions. Abuse and misuse can result in overdose or death, especially when benzodiazepines are combined with other medicines, such as opioids, alcohol, or illicit drugs.

The risk of dependence increases with higher doses and longer term use but can occur with short-term use at recommended therapeutic doses. The risk of dependence is greater in patients with a history of psychiatric disorders and/or substance (including alcohol) use disorder.

- Discuss the risks of treatment with FLURAZEPAM with the patient, considering alternative (including non-drug) treatment options.
- Carefully evaluate each patient's risk of abuse, misuse and addiction, considering their medical condition and concomitant drug use, prior to prescribing FLURAZEPAM. In individuals prone to substance use disorder, FLURAZEPAM should only be administered if deemed medically necessary, employing extreme caution and close supervision.
- FLURAZEPAM should always be prescribed at the lowest effective dose for the shortest duration possible.
- All patients receiving benzodiazepines should be routinely monitored for signs and symptoms of misuse and abuse. If a substance use disorder is suspected, evaluate the patient and refer them for substance abuse treatment, as appropriate.

**Withdrawal:** Benzodiazepines, such as FLURAZEPAM, can produce withdrawal signs and symptoms, ranging from mild to severe and even life threatening, following abrupt discontinuation or rapid dose reduction. Other factors that may precipitate withdrawal are switching from a long-acting to a short-acting benzodiazepine, decreasing blood levels of the drug or administration of an antagonist. The risk of withdrawal is higher with higher dosages and/or prolonged use, but can occur with short-term use at recommended therapeutic doses.

The onset of withdrawal signs and symptoms can range from hours to weeks following drug cessation and occur even with tapered dosage. Some symptoms can persist for months. Since symptoms are often



similar to those for which the patient is being treated, it may be difficult to distinguish from a relapse of the patient's condition.

Severe or life-threatening signs and symptoms of withdrawal include catatonia, delirium tremens, depression, dissociative effects (e.g. hallucinations), mania, psychosis, seizures (including status epilepticus) and suicidal ideation and behaviour.

Other withdrawal signs and symptoms include abdominal cramps, cognitive impairment, diarrhea, dysphoria, extreme anxiety or panic attacks, headache, hypersensitivity to light, noise and physical contact, insomnia, irritability, muscle pain or stiffness, paresthesia, restlessness, sweating, tension, tremors and vomiting. There is also a possibility of rebound anxiety or rebound insomnia.

- Abrupt discontinuation should be avoided and treatment - even if only of short duration - should be terminated by gradually tapering the dosage schedule under close monitoring.
- Tapering should be tailored to the specific patient. Special attention should be given to patients with a history of seizure.
- If a patient experiences withdrawal symptoms, consider postponing the taper or raising the benzodiazepine to the previous dosage prior to proceeding with a gradual taper.
- Inform patients of risk of discontinuing abruptly, reducing dosage rapidly or switching medications.
- Stress the importance of consulting with their health care professional in order to discontinue safely.
- Patients experiencing withdrawal symptoms should seek immediate medical attention.

(see [Addiction, Abuse and Misuse](#); [Withdrawal](#); [4.1 Dosing Considerations](#))

### **Driving and Operating Machinery**

Because of FLURAZEPAM's CNS depressant effect, patients receiving the drug should be cautioned against engaging in hazardous occupations requiring complete mental alertness such as operating machinery or driving a motor vehicle. For the same reason, patients should be warned against the concomitant ingestion of FLURAZEPAM and alcohol or CNS- depressant drugs. (see [9.3 Drug-Behavioural Interactions](#); [9.4 Drug-Drug Interactions](#))

### **Falls and Fractures**

There have been reports of falls and fractures among benzodiazepine users due to adverse reactions such as sedation, dizziness and ataxia. The risk is increased in those taking concomitant sedatives (including alcoholic beverages), the elderly or debilitated patients.

### **Hepatic/Biliary/Pancreatic**

FLURAZEPAM should be given with caution to patients with impaired hepatic function.

### **Immune**

**Severe Anaphylactic and Anaphylactoid Reactions:** Rare cases of angioedema involving the tongue, glottis or larynx have been reported in patients after taking the first or subsequent doses of sedative-hypnotics, including FLURAZEPAM. Some patients have had additional symptoms such as dyspnea, throat closing or nausea and vomiting that suggest anaphylaxis. Some patients have required medical therapy in the emergency department. If angioedema involves the throat, glottis or larynx, airway obstruction may occur and be fatal. Patients who develop angioedema after treatment with FLURAZEPAM should

not be rechallenged with the drug.

### **Monitoring and Laboratory Tests**

Should FLURAZEPAM be used repeatedly, periodic blood counts, liver, and kidney function tests should be performed.

### **Neurologic**

**Memory disturbance:** Anterograde amnesia of varying severity has been reported following therapeutic doses of benzodiazepines. The event is rare with FLURAZEPAM. Anterograde amnesia is a dose-related phenomenon and elderly subjects may be at particular risk.

Cases of transient global amnesia and "traveller's amnesia" have also been reported in association with benzodiazepines, the latter in individuals who have taken benzodiazepines, often in the middle of the night, to induce sleep while travelling. Transient global amnesia and traveller's amnesia are unpredictable and not necessarily dose-related phenomena. Patients should be warned not to take FLURAZEPAM under circumstances in which a full night's sleep and clearance of the drug from the body are not possible before they need again to resume full activity.

### **Psychiatric**

**Abnormal thinking and psychotic behavioural changes** have been reported to occur in association with the use of benzodiazepines including FLURAZEPAM, although rarely. Some of the changes may be characterized by decreased inhibition, e.g., aggressiveness or extroversion that seem excessive, similar to that seen with alcohol and other CNS depressants (e.g., sedative/hypnotics). Particular caution is warranted in patients with a history of violent behaviour and a history of unusual reactions to sedatives including alcohol and the benzodiazepines. Psychotic behavioural changes that have been reported with benzodiazepines include bizarre behaviour, hallucinations, and depersonalization. Abnormal behaviours associated with the use of benzodiazepines have been reported more with chronic use and/or high doses but they may occur during the acute, maintenance or withdrawal phases of treatment.

It can rarely be determined with certainty whether a particular instance of abnormal behaviour listed above is drug induced, spontaneous in origin, or a result of an underlying psychiatric disorder. Nevertheless, the emergence of any new behavioural sign or symptom of concern requires careful and immediate evaluation.

**Anxiety/Restlessness:** An increase daytime anxiety and/or restlessness have been observed during treatment with short half-life benzodiazepines although the syndrome can apply on occasion to drugs with longer elimination half-lives as well. FLURAZEPAM has a long half-life.

**Complex Sleep-related Behaviours:** Complex sleep-related behaviours such as "sleep-driving" (i.e., driving while not fully awake after ingestion of a sedative-hypnotic, with amnesia for the event) have been reported in patients who have taken FLURAZEPAM. Other potentially dangerous behaviours have been reported in patients who got out of bed after taking a sedative-hypnotic and were not fully awake, including preparing and eating food, making phone calls, leaving the house, etc. As with "sleep-driving", patients usually do not remember these events. The use of alcohol and other CNS-depressants with FLURAZEPAM appears to increase the risk of such behaviours, as does the use of FLURAZEPAM at doses exceeding the maximum recommended dose. FLURAZEPAM is not to be taken with alcohol. Caution is needed with concomitant use of other CNS depressant drugs. Due to the risk to the patient and the

community, discontinuation of FLURAZEPAM should be strongly considered for patients who report any such sleep-related behaviours.

**Confusion:** The benzodiazepines affect mental efficiency, e.g., concentration, attention and vigilance. The risk of confusion is in greater in the elderly and in patients with cerebral impairment.

**Depression:** Caution should be exercised if FLURAZEPAM is prescribed to patients with signs or symptoms of depression that could be intensified by hypnotic drugs. The potential for self-harm (e.g., intentional overdose) is high in patients with depression and thus, the least amount of drug that is feasible should be available to them at any one time.

**Rebound Insomnia:** A transient syndrome whereby the symptoms that led to treatment with a benzodiazepines recur in an enhanced form, may occur on withdrawal of hypnotic treatment.

## **Renal**

FLURAZEPAM should be given with caution to patients with impaired renal function.

## **Respiratory**

Respiratory depression has been reported in patients with compromised respiratory function.

### **7.1 Special Populations**

#### **7.1.1 Pregnant Women**

The use of FLURAZEPAM during pregnancy is not recommended. Benzodiazepines may cause fetal damage when administered during pregnancy. During the first trimester of pregnancy, several studies have suggested an increased risk of congenital malformations associated with the use of benzodiazepines. During the last weeks of pregnancy, ingestion of therapeutic doses of a benzodiazepine hypnotic has resulted in neonatal CNS depression due to transplacental distribution. If FLURAZEPAM is prescribed to women of childbearing potential, the patient should be warned of the potential risk to a fetus and advised to consult her physician regarding the discontinuation of the drug if she intends to become pregnant or suspects that she might be pregnant. Non-teratogenic effects: a child born to a mother who is on benzodiazepines may be at risk for withdrawal symptoms from the drug during the postnatal period. Also, neonatal flaccidity has been reported in an infant born to a mother who had been receiving benzodiazepines.

#### **7.1.2 Breast-feeding**

The safety of FLURAZEPAM during lactation has not been established. Therefore, its use during nursing is not recommended.

#### **7.1.3 Pediatrics**

Based on the data submitted and reviewed by Health Canada, the safety and efficacy of FLURAZEPAM in children below the age of 15 have not been established; therefore, Health Canada has not authorized an indication for pediatric use.

#### **7.1.4 Geriatrics**

Elderly patients are especially susceptible to dose-related adverse effects, such as drowsiness, dizziness, or impaired coordination. Inappropriate, heavy sedation may result in accidental events/falls. Therefore, the lowest possible dose (15 mg) should be used in these subjects.

Long-term use of FLURAZEPAM should be avoided in elderly or debilitated patients who may be more sensitive to benzodiazepines. There is an increased risk of cognitive impairment, delirium, falls, fractures, hospitalizations and motor vehicle accidents in these users. Enhanced monitoring is recommended in this population.

## 8 ADVERSE REACTIONS

### 8.1 Adverse Reaction Overview

The most common adverse reactions reported with FLURAZEPAM are dizziness, drowsiness, lightheadedness, and ataxia. These adverse effects are particularly common in elderly and debilitated patients. (See [7.1.4 Geriatrics](#)) Severe sedation, lethargy, disorientation, and coma, probably indicative of drug intolerance or overdose, have been reported. (see [5 OVERDOSAGE](#))

Isolated instances of headache, heartburn, upset stomach, nausea, vomiting, amnesia, constipation, diarrhea, gastrointestinal pain, nervousness, apprehension, irritability, weakness, palpitations, chest pains, and genito-urinary complaints have been reported. However, in controlled studies, these appeared as often or more often with placebo than with the active drug.

There have also been rare occurrences of leukopenia, granulocytopenia, sweating, flushes, difficulty in focusing, blurred vision, faintness, hypotension, shortness of breath, pruritus, skin rash, dry mouth, bitter taste, excessive salivation, anorexia, euphoria, depression, slurred speech, confusion, restlessness, hallucinations, nightmares, numbed emotions, reduced alertness, changes in libido, inappropriate behaviour and elevated SGOT, SGPT, total and direct bilirubins, and alkaline phosphatase. Paradoxical reactions such as excitement, stimulation, agitation, aggressiveness, rages, psychoses and hyperactivity have also been reported in rare instances when using drugs that act at the benzodiazepine receptors.

### 8.5 Post-Market Adverse Reactions

#### Injury, Poisoning and Procedural Complications

There have been reports of falls and fractures in benzodiazepine users due to adverse reactions such as sedation, dizziness and ataxia. The risk is increased in those taking concomitant sedatives (including alcoholic beverages), the elderly and debilitated patients.

#### Dependence/Withdrawal

Development of physical dependence and withdrawal following discontinuation of therapy has been observed with benzodiazepines such as FLURAZEPAM. Severe and life-threatening symptoms have been reported. (see [Addiction, Abuse and Misuse](#); [Dependence/Tolerance](#)).

## 9 DRUG INTERACTIONS

### 9.1 Serious Drug Interactions

#### Serious Drug Interactions

Concomitant use of FLURAZEPAM and opioids may result in profound sedation, respiratory depression, coma and death.

- Reserve concomitant prescribing of these drugs for use in patients for whom alternative treatment options are not possible.

- Limit dosages and durations to the minimum required.
- Follow patients for signs and symptoms of respiratory depression and sedation.  
(see [Risks from Concomitant use with Opioids](#)).

## 9.2 Drug Interactions Overview

FLURAZEPAM may produce additive CNS depressant effects when co-administered with alcohol, sedative antihistamines, narcotic analgesics, anticonvulsants, or psychotropic medications which themselves can produce CNS depression.

Compounds which inhibit certain hepatic enzymes (particularly cytochrome P450) may enhance the activity of benzodiazepines. Examples include cimetidine or erythromycin.

## 9.3 Drug-Behavioural Interactions

FLURAZEPAM may produce additive CNS depressant effects when co-administered with alcohol.

## 9.4 Drug-Drug Interactions

The drugs listed in this table are based on either drug interaction case reports or studies, or potential interactions due to the expected magnitude and seriousness of the interaction.

**Table 2 - Established or Potential Drug-Drug Interactions**

Proper/Common name	Source of Evidence	Effect	Clinical comment
Sedative Antihistamines	T	Co-administration with benzodiazepines may produce additive CNS depressant effects	Caution is warranted and therapeutic concentration monitoring is recommended. (see <a href="#">4 DOSAGE AND ADMINISTRATION</a> )
Anticonvulsants	T		
Psychotropic Medications	T		
Cimetidine	T	Compounds which inhibit certain hepatic enzymes (particularly cytochrome P450) may enhance the activity of benzodiazepines	
Erythromycin	T		

Opioids or Narcotic Analgesics	T	Due to additive CNS depressant effect, the concomitant use of benzodiazepines, including OXPAM, and opioids increases the risk of profound sedation, respiratory depression, coma, and death.	Reserve concomitant prescribing of these drugs for use in patients for whom alternative treatment options are inadequate. Limit dosages and durations of concomitant use of benzodiazepines and opioids to the minimum required. Follow patients closely for respiratory depression and sedation (see <a href="#">Risks from Concomitant use with Opioids</a> ; <a href="#">Concomitant use with opioids</a> ).
--------------------------------	---	---	---

Legend: C = Case Study; CT = Clinical Trial; T = Theoretical

### 9.5 Drug-Food Interactions

Interactions with food have not been established.

### 9.6 Drug-Herb Interactions

Interactions with herbal products have not been established.

### 9.7 Drug-Laboratory Test Interactions

Interactions with laboratory tests have not been established.

## 10 CLINICAL PHARMACOLOGY

### 10.1 Mechanism of Action

FLURAZEPAM (flurazepam hydrochloride), a benzodiazepine derivative, is a hypnotic agent which does not appear to decrease dream time as measured by rapid eye movements (REM). FLURAZEPAM decreases sleep latency and number of awakenings for a consequent increase in total sleep time.

The duration of hypnotic effect and the profile of unwanted effects may be influenced by the alpha (distribution) and beta (elimination) half-lives of the administered drug and any active metabolites formed. When half-lives are long, the drug or metabolite may accumulate during periods of nightly administration and be associated with impairments of cognitive and motor performance during waking hours. If half-lives are short, the drug and metabolites will be cleared before the next dose is ingested, and carry-over effects related to sedation or CNS depression should be minimal or absent. However, during nightly use and for an extended period, pharmacodynamic tolerance or adaptation to some effects of benzodiazepine hypnotics may develop. If the drug has a very short elimination half-life, it is possible that a relative deficiency (i.e., in relation to the receptor site) may occur at some point in the interval between each night's use. This sequence of events may account for two clinical findings reported to occur after several weeks of nightly use of rapidly eliminated benzodiazepine hypnotics: 1) increased wakefulness during the last third of the night; and 2) the appearance of increased daytime anxiety (see [Psychiatric; Anxiety/Restlessness](#)).

FLURAZEPAM is a benzodiazepine with a long half-life.

## 10.2 Pharmacodynamics

In animals, flurazepam hydrochloride has been demonstrated to produce sedative, anticonvulsant, taming, and muscle relaxant effects. At high doses, flurazepam hydrochloride exhibited sedative effects in rats (36 mg/kg), as well as a depressant effect on behaviour in squirrel monkeys (40 mg/kg). Some cardiovascular depressant effects were also observed, but were largely attributed to the central nervous system depressant effects of high doses.

FLURAZEPAM and its metabolites bind with high affinity to mouse brain membranes. In vitro specific binding affinities ( $K_i$ ) for flurazepam, hydroxyethyl-flurazepam, flurazepam aldehyde and desalkyl-flurazepam were 10.7, 16.2, 10.6, and 0.85 nM, respectively. Flurazepam hydrochloride is rapidly absorbed from the gastrointestinal tract and is rapidly metabolized. Studies in rats with  $^{14}\text{C}$ -labelled flurazepam hydrochloride indicated that the drug is widely distributed throughout body tissues with no excessive accumulation of drug or metabolite in any one tissue.

## 10.3 Pharmacokinetics

### Absorption

Following oral administration of 15 mg flurazepam hydrochloride to male and female volunteers, measurable concentrations for the parent compound were not detectable.

### Distribution and Metabolism

FLURAZEPAM undergoes rapid and pronounced metabolism to two pharmacologically active metabolites, namely hydroxyethyl flurazepam and flurazepam aldehyde. In healthy volunteers,  $C_{\max}$  values for the two metabolites were 8.6 and 2.5 ng/mL respectively. They were reached in an average of 1.0 and 1.2 hours, respectively.

The final active and principal metabolite, desalkyl flurazepam (DAFLZ), appears in the systemic circulation more slowly, with a mean  $C_{\max}$  of 14 ng/mL attained an average of 10.6 hours after dosing.

### Elimination

The mean elimination half-lives for hydroxyethyl flurazepam and flurazepam aldehyde were less than 2.5 hours.

The mean elimination half-life of DAFLZ is approximately 75 hours (range 50 to 100 hours). Therefore, multiple-dose therapy with flurazepam leads to the accumulation of DAFLZ.

More than 50% of the total dose of flurazepam appears in the urine in 24 hours, with eventual urinary excretion accounting for 80% or more of the total dose. The major urinary metabolite is conjugated hydroxyethyl flurazepam. Less than 1% of the dose is excreted in the urine as DAFLZ. Approximately 10% of the total dose of flurazepam appears in the feces.

### Special Populations and Conditions

- **Geriatrics:** Following 15 days treatment with 15 mg flurazepam once daily, mean steady-state plasma levels of DAFLZ were higher in elderly than in young men (81 and 53 ng/mL,  $p < 0.05$ ) but were similar in elderly and young women (86 and 85 ng/mL). The half-life of DAFLZ was found to be longer in elderly males than in young males (160 versus 74 hours,  $p < 0.05$ ), but was similar in elderly

and young females (120 versus 90 hours,  $p=N.S.$ ). DAFLZ was extensively bound to plasma protein. The unbound fraction increased with age regardless of sex.

## **11 STORAGE, STABILITY AND DISPOSAL**

Keep in a tightly closed, light-resistant container. Store at room temperature (15-25°C).

## **12 SPECIAL HANDLING INSTRUCTIONS**

None

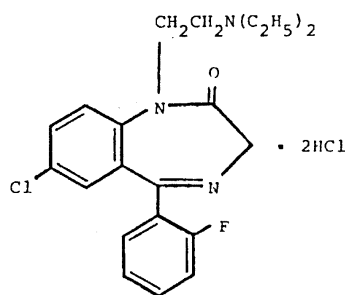


## PART II: SCIENTIFIC INFORMATION

### 13 PHARMACEUTICAL INFORMATION

#### Drug Substance

Proper name:	Flurazepam Hydrochloride
Chemical name:	7-chloro- 1- [2(diethylamino)ethyl]-5-(0-fluorophenyl)-1, 3-dihydro-2H- 1, 4-benzodiazepin-2-one-dihydrochloride
Molecular formula and molecular mass:	C <sub>21</sub> H <sub>23</sub> ClFN <sub>3</sub> O.2HCl and 460.81
Structural formula:	



Physicochemical properties:	Flurazepam hydrochloride occurs as an off--white to yellow, nearly odorless, crystalline powder, with a melting point of 190-220°C.
Solubility	Soluble 1 in 2 of water, 1 in 4 of alcohol, 1 in 90 of chloroform, 1 in 3 of methyl alcohol, and 1 in 69 of isopropyl alcohol; very slightly soluble in ether and petroleum spirit and in chloroform.

### 14 CLINICAL TRIALS

The clinical trial data on which the original indication was authorized is not available.

### 15 MICROBIOLOGY

No microbiological information is required for this drug product.

### 16 NON-CLINICAL TOXICOLOGY

**General Toxicology:** The oral LD<sub>50</sub> was 870 mg/kg in mice, 1,232 mg/kg in rats and 568 mg/kg in rabbits. Chronic toxicity studies for one year indicated that the tolerated dose is 80 mg/kg/day in the rat and 10 mg/kg/day in the dog.

**Reproductive and Developmental Toxicology:** A two-cycle reproductive study in rats was carried out at doses of 5 and 50 mg/kg/day of flurazepam hydrochloride. There were no significant teratogenic or other adverse effects related to the drug. In the second series of rat reproductive studies, doses of 3 and 20 mg/kg/day of flurazepam hydrochloride did not induce changes in fertility and general reproductive performance. There were no significant teratogenic effects related to the drug or adverse effects in the perinatal and postnatal study. In another reproductive study in rats at doses of 10, 20, 40 and 80 mg/kg/day, no adverse effects on reproduction and no significant teratological changes were noted.

In rabbits, two sets of teratogenic studies were done. In the first, flurazepam hydrochloride was administered in doses of 5 and 20 mg/kg/day. Twenty-three live litters were obtained in this study. One animal which received 20 mg/kg/day had a litter of nine viable but deformed fetuses. In the second study, the dose of flurazepam hydrochloride was increased to 40 mg/kg/day without the occurrence of abnormalities in all eleven litters. In both studies, there were no significant differences between the control and treated groups in maternal weight, body weight of viable fetuses, fetal body weight and litter size.

## PATIENT MEDICATION INFORMATION

### READ THIS FOR SAFE AND EFFECTIVE USE OF YOUR MEDICINE

#### FLURAZEPAM

#### Flurazepam Hydrochloride Capsules

Read this carefully before you start taking **FLURAZEPAM** and each time you get a refill. This leaflet is a summary and will not tell you everything about this drug. Talk to your healthcare professional about your medical condition and treatment and ask if there is any new information about **FLURAZEPAM**.

#### Serious Warnings and Precautions

**Addiction, Abuse and Misuse:** Even if you take **FLURAZEPAM** exactly as you were told to, you are at risk for abuse, misuse, addiction, physical dependence and withdrawal. Abuse and misuse can result in overdose or death, especially if you take **FLURAZEPAM** with:

- opioids,
- alcohol, or
- illicit drugs.

#### Your doctor should:

- talk to you about the risks of treatment with **FLURAZEPAM** as well as other treatment (including non-drug) options.
- assess your risk for these behaviours before prescribing **FLURAZEPAM**.
- monitor you while you are taking **FLURAZEPAM** for the signs and symptoms of misuse and abuse. If you feel like you are craving **FLURAZEPAM**, or not using it as directed, talk to your doctor right away.

Store **FLURAZEPAM** in a secure place to avoid theft or misuse.

**Withdrawal:** If you suddenly stop taking **FLURAZEPAM**, lower your dose too fast, or switch to another medication, you can experience severe or life-threatening withdrawal symptoms (see **Other warnings you should know about**).

- Always contact your doctor before stopping, or lowering your dose of **FLURAZEPAM** or changing your medicine.

**FLURAZEPAM with Opioids:** Taking **FLURAZEPAM** with opioid medicines can cause:

- severe drowsiness,
- decreased awareness,
- breathing problems,
- coma, or
- death.

### **What is FLURAZEPAM used for?**

FLURAZEPAM is used in adults to treat short-term insomnia. This is a sleep disorder that makes it hard to fall asleep, hard to stay asleep, or causes you to wake up too early. FLURAZEPAM should be only be used when the effects of insomnia affect your daytime activities.

If you are 65 years or older, talk to your doctor before starting FLURAZEPAM. FLURAZEPAM may not be an effective treatment for you and you may be more sensitive to experiencing side effects.

### **How does FLURAZEPAM work?**

FLURAZEPAM belongs to a group of medicines called benzodiazepine sleeping pills. It works to decrease the time required to fall asleep and the number of times you wake up during sleep.

### **What are the ingredients in FLURAZEPAM?**

Medicinal ingredient: Flurazepam hydrochloride.

Non-medicinal ingredients: lactose monohydrate, cornstarch, stearic acid and talc.

Capsule shell: gelatin, titanium dioxide, FD&C yellow #6 and D&C yellow #10 and FD&C red #40. The 30 mg capsule shell also contains FD&C blue #1

The edible ink for the 15 mg capsule contains the non-medicinal ingredients shellac, propylene glycol, strong ammonia solution, potassium hydroxide and black iron oxide.

The edible ink for the 30 mg capsule contains the non-medicinal ingredients shellac, black iron oxide, propylene glycol, FD&C blue #2 aluminum lake, FD&C red #40 aluminum lake, FD&C blue #1 aluminum lake and D&C yellow #10 aluminum lake.

### **FLURAZEPAM comes in the following dosage forms:**

Capsules: 15 mg and 30 mg of flurazepam hydrochloride.

### **Do not use FLURAZEPAM if:**

- you are allergic to benzodiazepines, such as flurazepam hydrochloride, or to any other ingredients in FLURAZEPAM.
- you have severe lung or breathing problems (e.g., sleep apnea).
- you have myasthenia gravis (a condition characterized by weakness of your muscles).
- you have severe liver problems.

### **To help avoid side effects and ensure proper use, talk to your healthcare professional before you take FLURAZEPAM. Talk about any health conditions or problems you may have, including if you:**

- have ever had a problem with:
  - substance use, including prescribed or illegal drugs, or
  - alcohol.
- have ever had seizures or convulsions (violent uncontrollable shaking of the body with or without loss of consciousness)

- have lung or breathing problems.
- have liver problems.
- have kidney problems.
- have signs of depression or a history of depression.
- have a history of suicide thoughts or attempts.
- have a history of violent behaviours.
- have had an unexpected reaction to sedative medications in the past (e.g., such as irritability, aggression, hallucinations, etc.).
- are pregnant or planning to become pregnant, FLURAZEPAM is not recommended for use during pregnancy.
- are breast-feeding or planning to breast-feed. FLURAZEPAM is not recommended for use during breast-feeding.
- drink or plan to drink alcohol. Do not drink alcohol while you take FLURAZEPAM.
- are taking other medications, including over-the-counter medications, opioids, sedatives, medications that affect your central nervous system (CNS depressants).
- are taking illicit drugs.
- are unable to digest lactose, a milk sugar (lactose intolerance). Lactose is a component of FLURAZEPAM.
- are 65 years of age or older.
- have a condition that causes weakness or frailty.
- have impaired thinking, confusion or any other type of brain damage.

**Other warnings you should know about:**

**Sleep-Related Behaviours:**

Treatment with FLURAZEPAM can cause potentially dangerous sleeping-related behaviours such as getting out of bed while not fully awake after taking FLURAZEPAM and doing activities that you do not know you are doing. If this happens, you may not remember doing these activities when you wake up. These unusual behaviours are more likely to occur when FLURAZEPAM is taken with alcohol or other drugs that can make you sleepy (e.g., medicines used to treat depression or anxiety). If you drink alcohol, do not take FLURAZEPAM. The activities you may do in these situations can put you and people around you in danger. This can include driving a car (“sleep-driving”), leaving the house, making and eating food, and talking on the phone.

You and people close to you should watch unusual types of behavior when you are asleep. If you find out that you have done any such activities for which you have no memory, you should call your healthcare professional immediately.

**Memory Problems:** In rare cases, FLURAZEPAM can cause a type of memory loss known as amnesia. This is characterized by having difficulty recalling events that recently occurred, usually several hours

after taking the medication. If you intend to take FLURAZEPAM before sleeping, this is usually not a problem. However, if you take FLURAZEPAM to induce sleep while travelling, such as during an airplane flight, you may wake up to memory lapse caused by the drug. This has been called “traveller's amnesia” and can be a problem. Therefore, DO NOT TAKE FLURAZEPAM when a full night's sleep is not possible before you need to be active and functional (e.g., an overnight flight of less than 8 hours). Your body needs time to eliminate the medication from your system.

**Withdrawal:** If you suddenly stop your treatment, lower your dose too fast, or switch to another medication, you can experience withdrawal symptoms that can range from mild symptoms to severe or life threatening. Some of your withdrawal symptoms can last for months after you stop FLURAZEPAM. Your risk of going through withdrawal is higher if you are taking FLURAZEPAM for a long time or at high doses. However, symptoms can still occur if you are taking FLURAZEPAM as directed for a short period of time or slowly reducing the dose.

The symptoms of withdrawal often resemble the condition that you are being treated for. After stopping your treatment, it may be hard to tell if you are experiencing withdrawal or a return of your condition (relapse).

Tell your doctor **right away** if you experience any symptoms of withdrawal after changing or stopping your treatment.

Severe symptoms of withdrawal include:

- feeling like you cannot move or respond (catatonia)
- severe confusion, shivering, irregular heartrate and excessive sweating (delirium tremens)
- feeling depressed
- feeling disconnected from reality (dissociation)
- seeing or hearing things that are not there (hallucinations)
- overactive behaviour and thoughts (mania)
- believing in things that are not true (psychosis)
- convulsions (seizures), including some that do not stop
- thoughts or actions of suicide

For other symptoms of withdrawal, see the **Serious side effects and what to do about them** table (below).

To reduce your chances of going through withdrawal:

- always contact your doctor before stopping or reducing your dose of FLURAZEPAM or changing medications
- always follow your doctor's instructions on how to reduce your dose carefully and safely
- tell your doctor **right away** if you experience any unusual symptoms after changing or stopping your treatment

**FLURAZEPAM with Opioids:** Taking FLURAZEPAM with opioid medicines can cause severe drowsiness and breathing problems.

Tell your doctor if you:

- are taking opioid medicines
- are prescribed an opioid medicine after you start taking FLURAZEPAM

Do NOT drive or operate heavy machinery or do tasks that require special attention until you know how taking an opioid medicine and FLURAZEPAM affects you.

**Falls and Fractures:** Benzodiazepines like FLURAZEPAM can cause you to feel sleepy, dizzy and affect your balance. This increases your risks of falling, which can cause fractures or other fall related-injuries, especially if you:

- take other sedatives,
- consume alcohol,
- are elderly or
- have a condition that causes weakness or frailty.

**Mental and Behavioural Changes:** A variety of abnormal thinking and behaviour changes may occur when you take benzodiazepine sleeping pills, including FLURAZEPAM. Some of these changes include aggressiveness and extroversion that seem out of character confusion, strange behaviour, anxiety, restlessness, hallucinations, feeling like you are not yourself, worsening insomnia or depression, and suicidal thoughts. It is hard to determine if these symptoms are caused by the medication, by an illness that was present before the medication was used, or are natural. If you develop any unusual thoughts or behaviour while using FLURAZEPAM, tell your healthcare professional right away.

**Worsening of Side Effects:**

DO NOT CONSUME ALCOHOL WHILE TAKING FLURAZEPAM. Your symptoms of insomnia may worsen with FLURAZEPAM, especially if you are also taking other similar medications.

**Severe Allergic Reaction:** In rare cases, FLURAZEPAM has caused severe allergic reactions including anaphylaxis, which can be life-threatening. The symptoms of a severe allergic reaction include angioedema of the tongue or throat (swelling of tissues under the skin), shortness of breath, throat closing, nausea or vomiting. Angioedema can lead to a blocked airway and can be life-threatening. If you develop angioedema or you notice signs of a severe allergic reaction after taking FLURAZEPAM, you should stop taking FLURAZEPAM and tell your healthcare professional right away.

**Elderly:** If you are 65 years of age or older and take benzodiazepines including FLURAZEPAM, you are at a higher risk of falls and fractures.

**Pregnancy:** Benzodiazepines, such as FLURAZEPAM, may cause a risk to your unborn baby (e.g., birth defects) if you are pregnant. This typically occurs more often during the first trimester or last weeks of pregnancy. If you are able to get pregnant, want to be or think you are pregnant, there are specific risks you should discuss with your healthcare professional.

**Monitoring and Testing:** If you are prescribed FLURAZEPAM, your healthcare professional may conduct blood tests to assess your health. Your healthcare professional will interpret your results and may adjust or stop your dose of FLURAZEPAM.

**Tell your healthcare professional about all the medicines you take, including any drugs, vitamins, minerals, natural supplements or alternative medicines.**

**The following may interact with FLURAZEPAM:**

**Serious Drug Interactions**

**Taking FLURAZEPAM and opioids may cause:**

- **severe drowsiness,**
- **trouble breathing,**
- **coma,**
- **death.**

- alcohol. Do not take FLURAZEPAM if you drink alcohol,
- sedative antihistamines that are used to treat allergies but make you drowsy or sleepy after you take them,
- anticonvulsants used to prevent or treat seizures,
- antidepressants used to treat depression,
- medicines used to alter your mental state or mood,
- other benzodiazepines typically used to treat anxiety, insomnia, and seizures (e.g., oxazepam),
- medicines that inhibit certain liver enzymes, particularly cytochrome P450 (e.g., cimetidine and erythromycin). If you are unsure, talk to your healthcare professional.

DO NOT USE FLURAZEPAM along with other medications without first discussing this with your doctor.

**How to take FLURAZEPAM:**

- Take FLURAZEPAM just before going to bed. Do not take FLURAZEPAM if a full night's sleep is not possible before you need to become active and functional again.
- Do not consume any alcohol while taking FLURAZEPAM.

**Usual dose:**

- Take FLURAZEPAM exactly as prescribed by your healthcare professional. They will determine the right dose and the length of FLURAZEPAM for you. This will depend on your age, current health, and if you take certain other medications.
- Your healthcare professional will also monitor how FLURAZEPAM is working for you, especially at the start of your treatment. They may adjust your dose to ensure that the lowest effective dose is prescribed.
- Your doctor will slowly decrease your dose and will tell you when to stop taking the medicine. Always follow your doctor's instructions on how to lower your dose carefully and safely to avoid experiencing withdrawal symptoms. However, if you notice any signs or symptoms of withdrawal, tell your healthcare professional right away.



**Overdose:**

Symptoms of an overdose with FLURAZEPAM include drowsiness, sleepiness, confusion and coma.

If you think you, a person you are caring for, or someone else have taken too much FLURAZEPAM, contact a healthcare professional, hospital emergency department, or regional poison control centre immediately, even if there are no symptoms. Show the healthcare professional your bottle of capsules.

**Missed Dose:**

If you forget or miss a dose of FLURAZEPAM, do not take the missed dose. Instead, take the next scheduled dose at the usual time. Do not try to make up for the missed dose by taking a double dose.

**What are possible side effects from using FLURAZEPAM?**

These are not all the possible side effects you may have when taking FLURAZEPAM. If you experience any side effects not listed here, tell your healthcare professional.

**Side effects of FLURAZEPAM may include:**

Very common (may affect more than 1 in 10 people):

- drowsiness,
- dizziness,
- light-headedness,
- difficulty with coordination.

Common (may affect up to 1 in 10 people):

- lethargy,
- disorientation (inability to know correct time, place or person),
- apprehension (worry about something or about what might happen),
- nervousness,
- heartburn,
- upset stomach,
- nausea,
- constipation,
- stomach pain,
- weakness,
- chest pains,
- urinary and genital problems,
- palpitations (heartbeats that become more noticeable).

Rare (may affect up to 1 in 10,000 people):

- flushing (redness of skin),
- blurred vision,
- fainting,
- itchiness,
- skin rash,
- dry mouth,
- bitter taste,

- excessive salivation,
- anorexia (a weight disorder characterized by low weight).

Unknown:

- falls and fractures.

Serious side effects and what to do about them			
Symptom / effect	Talk to your healthcare professional		Stop taking drug and get immediate medical help
	Only if severe	In all cases	
<b>COMMON</b>			
<b>Severe sedation:</b> reduced awareness, or reduced response to stimulation,		✓	
<b>RARE</b>			
<b>Low white blood cells</b> (e.g., leukopenia or granulocytopenia): infections, fatigue, fever, aches, pains, or flu-like symptoms		✓	
<b>Amnesia</b> (a type of memory loss): difficulty recalling events that recently happened		✓	
<b>Mental and behavioural changes:</b> difficulty focusing, euphoria, excitement, nightmares, numbed emotions, decreased alertness, agitation, hyperactivity, worsened insomnia, aggressiveness, rages, psychoses, violent behaviour, or inappropriate behaviour		✓	
<b>Severe allergic reactions:</b> swelling of the tongue or throat, trouble breathing, , sudden wheeziness, chest pain or tightness, shortness of breath, throat closing, nausea, or vomiting			✓
<b>Depression</b> (sad mood that won't go away): difficulty sleeping, sleeping too much, changes in appetite or weight, feelings of worthlessness, guilt, regret, helplessness, hopelessness, withdrawal from social situations, family, gatherings and activities with friends, thoughts of death or suicide, or reduced libido (sex drive)		✓	
<b>VERY RARE</b>			
<b>Somnambulism</b> (sleepwalking): getting out of bed while not fully awake and do activities you do not remember the day after, or sleep driving		✓	
<b>UNKNOWN FREQUENCY</b>			

Serious side effects and what to do about them			
Symptom / effect	Talk to your healthcare professional		Stop taking drug and get immediate medical help
	Only if severe	In all cases	
<b>Overdose:</b> extreme sleepiness, confusion, slurred speech, slow reflexes, slow shallow breathing, coma, loss of balance and coordination, uncontrolled rolling of the eyes, and low blood pressure.			✓
<b>Respiratory Depression:</b> slow, shallow or weak breathing.			✓
<b>Withdrawal:</b> <b>Severe symptoms include:</b> <b>Catatonia:</b> feeling like you cannot move or respond <b>Delirium tremens:</b> severe confusion, shivering, irregular heartrate and excessive sweating <b>Feeling depressed</b> <b>Dissociation:</b> feeling disconnected from reality <b>Hallucinations:</b> seeing or hearing things that are not there <b>Mania:</b> overactive behaviour and thoughts <b>Psychosis:</b> believing in things that are not true <b>Convulsions:</b> (seizures – including some that do not stop): loss of consciousness with uncontrollable shaking <b>Thoughts or actions of suicide</b> <b>Other symptoms include:</b> Stomach cramps; trouble remembering or concentrating; diarrhea; feeling uneasy or restless; severe anxiety or panic-attacks; headache; sensitivity to light, noise or physical contact; shaking; vomiting; trouble sleeping; feeling irritable; muscle pain or stiffness; a burning or prickling feeling in the hands, arms, legs or feet; sweating.		✓	

If you have a troublesome symptom or side effect that is not listed here or becomes bad enough to interfere with your daily activities, tell your healthcare professional.

### **Reporting Side Effects**

You can report any suspected side effects associated with the use of health products to Health Canada by:

- Visiting the Web page on Adverse Reaction Reporting (<https://www.canada.ca/en/health-canada/services/drugs-health-products/medeffect-canada.html>) for information on how to report online, by mail or by fax; or
- Calling toll-free at 1-866-234-2345.

*NOTE: Contact your healthcare professional if you need information about how to manage your side effects. The Canada Vigilance Program does not provide medical advice.*

### **Storage:**

Keep in a tightly closed, light-resistant container. Store at room temperature (15-25°C).

Keep out of reach and sight of children.

### **If you want more information about FLURAZEPAM:**

- Talk to your healthcare professional
- Find the full Product Monograph that is prepared for healthcare professionals and includes this Patient Medication Information by visiting the Health Canada website: (<https://www.canada.ca/en/health-canada/services/drugs-health-products/drug-products/drug-product-database.html>); the manufacturer's website <https://www.aapharma.ca/en/>, or by calling 1-877-998-9097.

This leaflet was prepared by AA Pharma Inc, Vaughan, Ontario, L4K 4N7

Last Revised: April 7, 2022